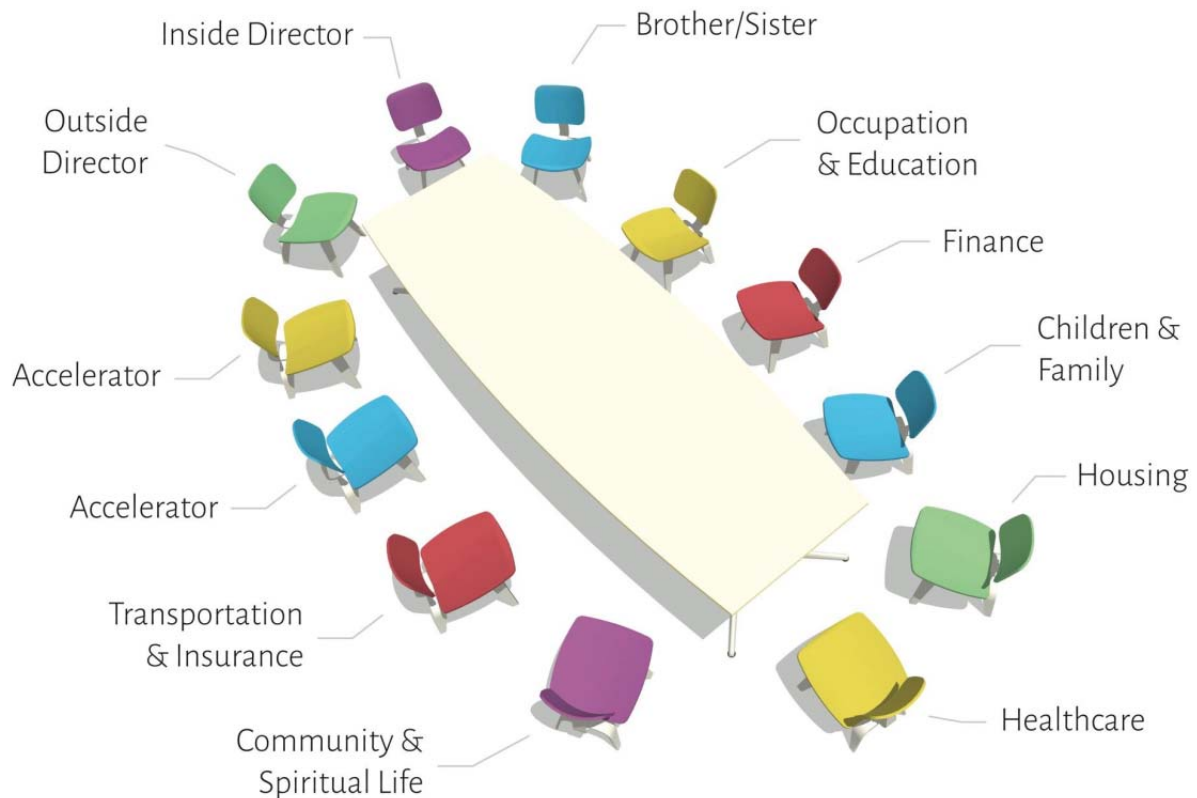


The Open Table Model



** In addition to these chair roles, one Table member will also serve as an advocate for the Brother/Sister*

© The Open Table, Inc., 2015-2016

Open Table Chair Descriptions – Family Table

Co-Director (Inside) - Direct the meetings, prepare agenda with input from Brother/Sister and Table Member. Assist the brother/sister to take leadership role at Table meetings. Keep record of all Table goal accomplishments. Ensure operational meetings start/end on time.

Co-Director (Outside) - Maintain communication with congregation regarding Table progress, network to congregation, local, City and State resources. Make sure feedback/research surveys are completed at the designated time.

Transportation and Insurance- Research all transportation needs. Ensure brother or sister have a means of transportation to attend Table meetings (this is a Table responsibility). Assist in determination of best options for reliable means of transportation to obtain/maintain employment which may not be a personal auto. Assist in identification of affordable auto insurance, budget needed for repairs and costs of ownership.

Children and Family- Support the family in becoming integrated into the life of the community. Record birthdays, anniversaries, and plan occasions for celebrations and family time.

Healthcare- Keep track and assist to make arrangements for medical/dental care, help the family navigate health insurance providers and systems. Also, aid the family in finding a quality primary care provider.

Occupation & Education- Focus on helping family members to complete their education, work with community job support resources, assist to write a resume and network to find job opportunities. Also, help the Brother/Sister develop a career path for future advancement and growth.

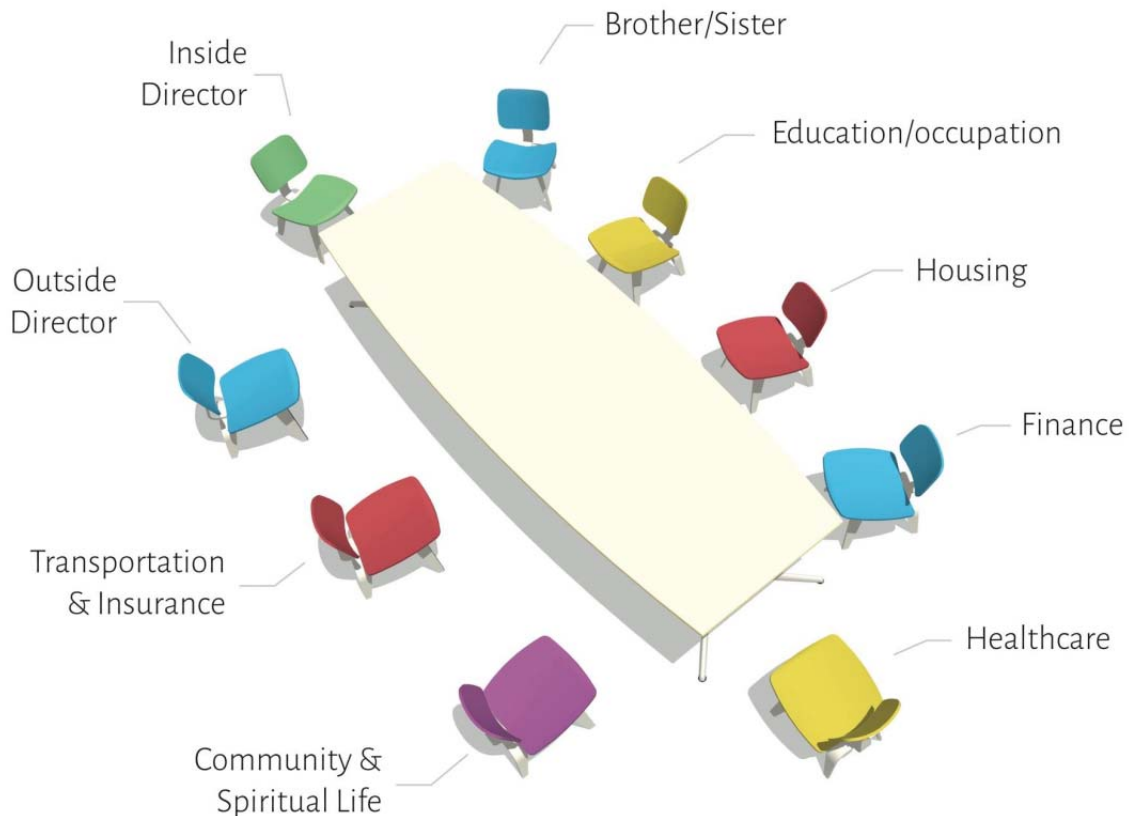
Housing- Help the family find/maintain safe and affordable housing. As needed, organize household furnishing drive and choreograph move to housing.

Finance- Helps the family identify potential income sources, seeks expertise to advise on tax implications and how to manage monthly expenses and cash flow. Work toward establishing a plan for building savings.

Community Life & Spiritual Journey – Keep the Table focused on the spiritual well-being of the family as well as the Table. Incorporates opportunities for all at the Table to share needs and praises at weekly meetings. Supports the Brother/Sister in the development of a healthy community of friends for themselves and their family.

Accelerators (2) - This person(s) is generally someone who is available during the work day to assist brother/sister and has availability to help other chairs move forward on specific tasks or goals.

Young Adult Version



** In addition to these chair roles, one Table member will also serve as an advocate for the Brother/Sister*

*** The Table size for Young Adult with no parenting responsibilities is 6 to 8 Table members, for Young Adults with parenting responsibility the Table size must be 10 to 12 Table members*

© The Open Table, Inc., 2015-2016

Open Table Chair Descriptions – Individual/Young Adult Table

Co-Director (Inside) - Direct the meetings, prepare agenda with input from brother/sister and Table Member. Assist the brother/sister to take leadership role at Table meetings. Keep record of all Table goal accomplishments. Ensure operational meetings start/end on time.

Co-Director (Outside)/Finance – Maintains communication with congregation regarding Table progress, networks to congregation, local, city and state resources. Make sure feedback/research surveys are completed at the designated time. Helps the family identify potential income sources, seeks expertise to advise on tax implications and how to manage monthly expenses and cash flow. Work toward establishing a plan for building savings.

Transportation and Insurance - Research all transportation needs. Ensure brother/sister have a means of transportation to attend Table meetings (this is a Table responsibility). Assist in determination of best options for reliable means of transportation to obtain/maintain employment which may not be a personal auto. Assist in identification of affordable auto insurance, budget needed for repairs and costs of ownership.

Community Life & Spiritual Journey – Keeps the Table focused on the spiritual well-being of the brother/sister as well as the Table. Incorporates opportunities for all at the Table to share

needs and praises at weekly meetings. Supports the Brother/Sister in the development of a healthy community of friends.

Healthcare- Keep track of and assist to make arrangements for medical/dental care, help the brother/sister navigate health insurance providers and systems. Also, aid the brother/sister in finding a quality primary care provider.

Education/Work/Career – Focus on helping the brother/sister complete/continue their education, work with community job support resources, write a resume and network to find jobs. Also, help the brother/sister develop a career path for future advancement and growth.

Housing- Help the brother/sister to find/maintain safe and affordable housing. As needed, organize household furnishing drive and choreograph move to housing.